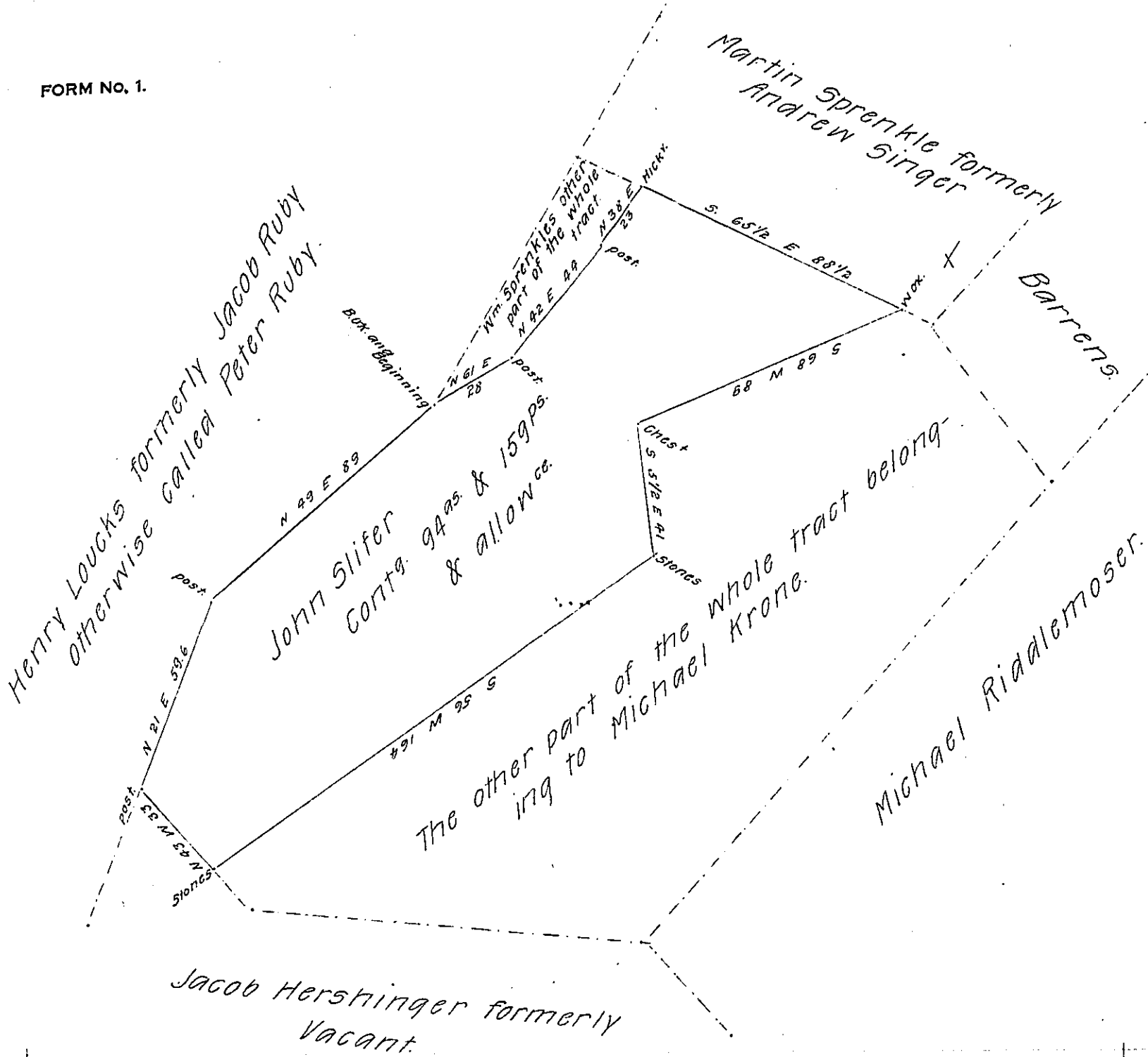


FORM No. 1.



Situate in Windsor township in the County of York containing as above set forth 94^{acs} & 159^{prs} and allow^{ce} being part of a larger tract of 227^{acs} & 55^{prs} and allow^{ce} &c which was originally surveyed by William Matthews late D.S in pursuance of a warrant granted to John Slifer for 150^{acs} dated the 3rd day of July A.D. 1762. Resurveyed and divided off from the said larger tract of land on the 8th day of January A.D. 1802, And now at the request of James Up John the present owner the same has been calculated examined and found to be correct and at his request returned for confirmation the 21st day of November Anno Domini 1811.

To Andrew Porter Esqr
Surveyor General, Lancaster, Pa.

Per Jacob Spangler D.S.

IN TESTIMONY that the above is a copy of the original remaining on file in the Department of Internal Affairs of Pennsylvania, made conformably to an Act of Assembly approved the 16th day of February 1833, I have hereunto set my hand and caused the Seal of said Department to be affixed at Harrisburg, this seventh day of April 1907.

James Upjohn
Secretary of Internal Affairs.